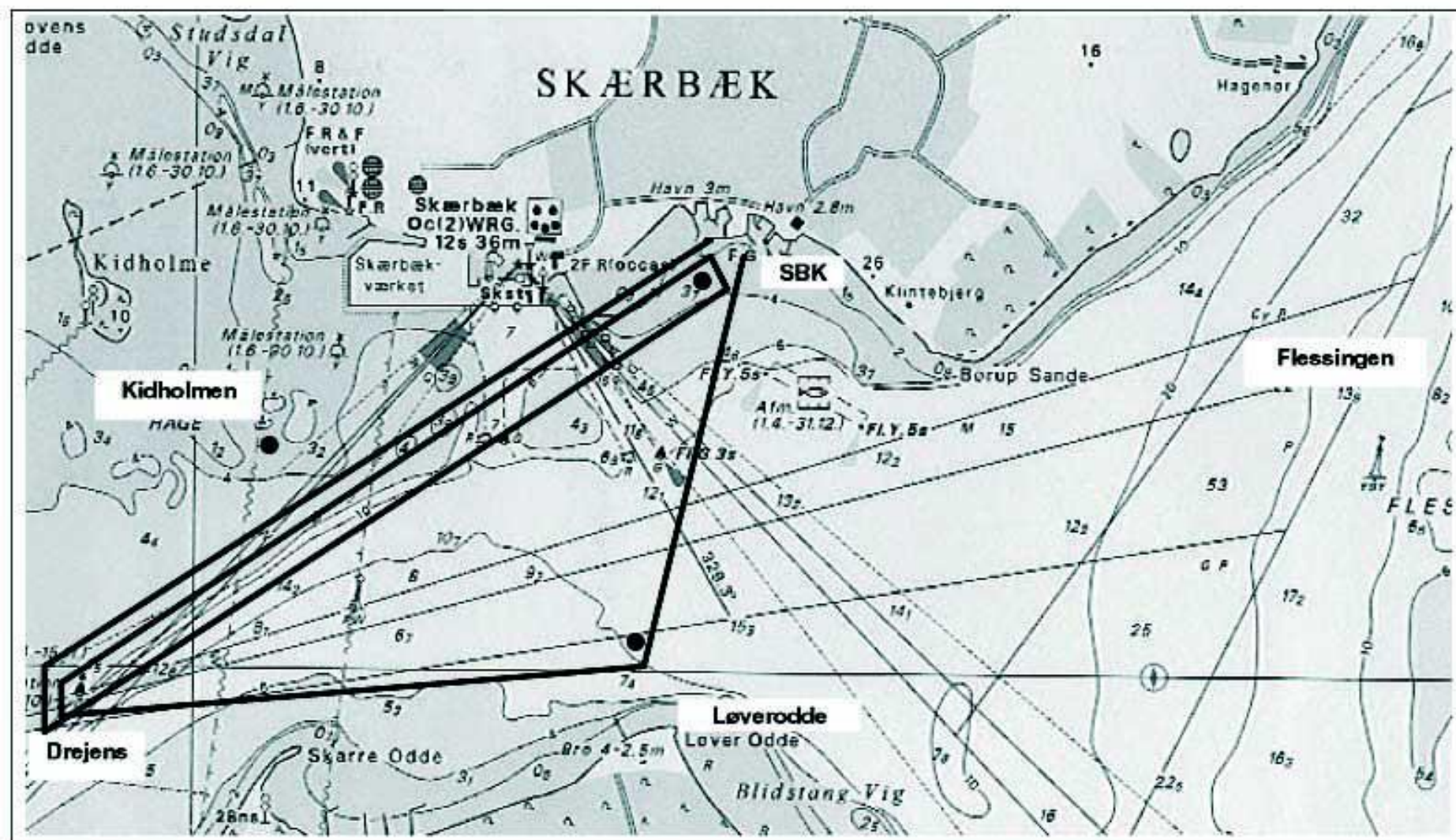




## Skærbæk bådeklubs onsdagssejlads - Bane 2 – 5,5 sm – eller 8,1 sm



Vindretning:

Nordøstlig Styrbord S-L-D-S-D-S (Ekstra ben + D-S) 

Sydvestlig Bagbord S-D-S-D-L-S (Ekstra ben + D-S) 

SBK	N 55.30.66 – E 09.37.62
Løverodde	N 55.29.93 – E 09.37.19
Drejens	N 55.29.95 – E 09.35.65
Kidholmen	N 55.30.37 – E 09.36.23
Flessingen	N 55.30.35 – E 09.39.68